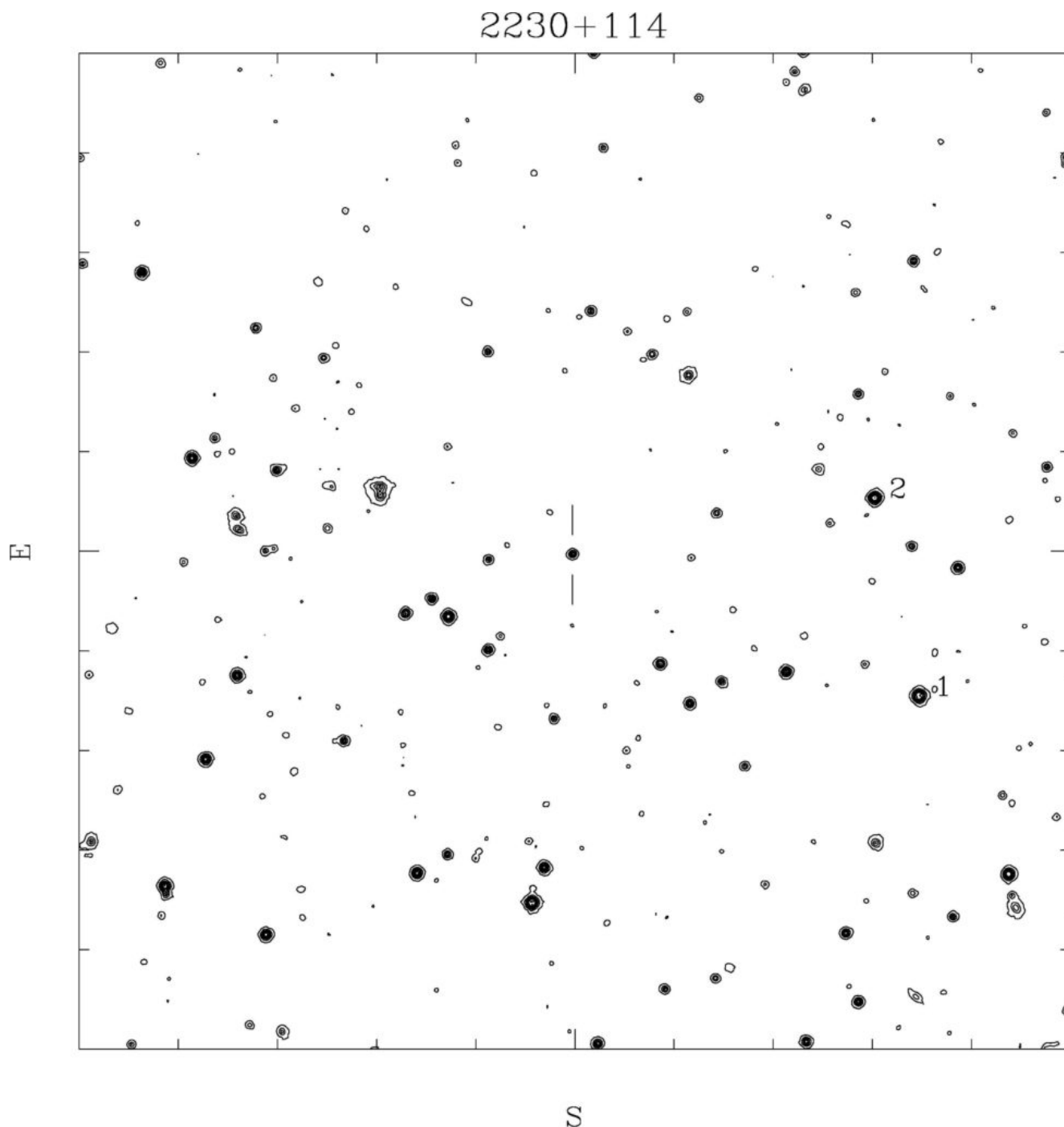


2230+114 (CTA 102)

Coordinates

R.A. = 22:32:36.40, Dec. = +11:43:51.3 (2000)

$z = 1.037$



Field of view is 10'x10'

GASP suggested stars: 1 2

Comparison stars

Star	B	V	R
1	14.77 (0.04)	13.98 (0.03)	13.56 (0.04)
2	16.17 (0.04)	14.88 (0.03)	14.07 (0.07)

from Raiteri C.M. et al., 1998, A&AS 130, 495