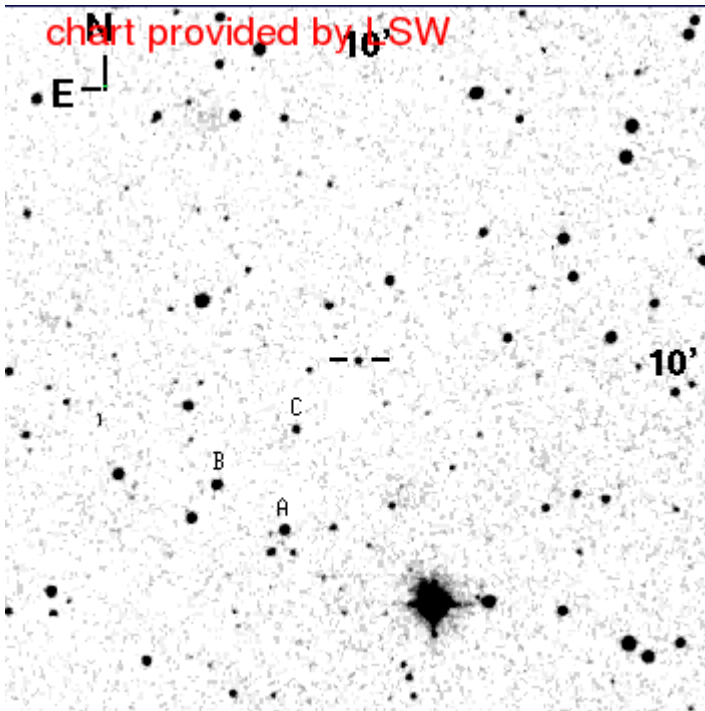


1633+382 (B2 1633+38, 4C 38.41, OS 356)

Coordinates

R.A. = 16:35:15.4929, Dec. = +38:08:04.500 (2000)

$z = 1.81357$



Landessternwarte Heidelberg-Königstuhl

Field of view is 10'x10'

GASP suggested stars: A B

Comparison stars

Star	B	V	R	I
A	16.39 (~ 0.10)	15.83 (~ 0.05)	15.48 (~ 0.05)	15.20 (~ 0.05)
B	16.69 (~ 0.10)	15.91 (~ 0.05)	15.44 (~ 0.05)	15.06 (~ 0.06)
C	19.06 (~ 0.10)	17.91 (~ 0.10)	17.22 (~ 0.10)	16.80 (~ 0.07)

BVR data from Villata M. et al., 1997, A&AS 121, 119

I data from the SDSS after transformation according to Chonis & Gaskell
(2008, AJ, 135, 264)